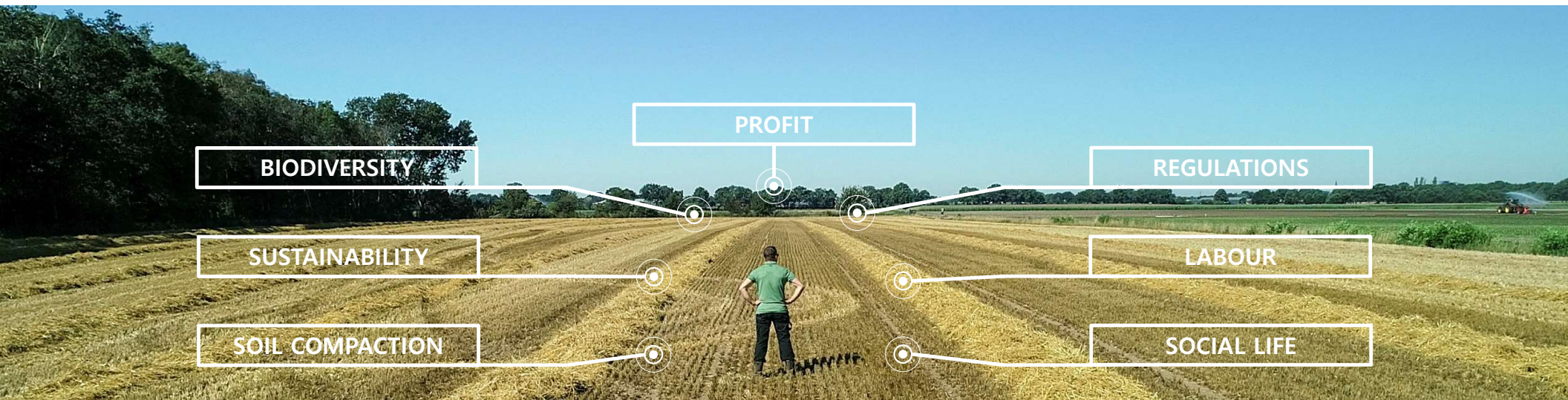




WE PROVIDE **AUTONOMY**



AGXFEED



CONFIDENTIAL

TODAY'S CHALLENGES for farmers... AGXEEED

Why do we do what we do?

We believe in farming.
We believe in a way of farming,
where the agricultural entrepreneur
is able to make the most of his land,
his crops and the environment.
For now and for future generations.

How do we do that?

Together with them we will change the
status quo of farming.
Sustainable agriculture can work out for everyone.
The key to that is true autonomy: freedom and
flexibility for the farmer in the way he cultivates his
land and manages his farm.

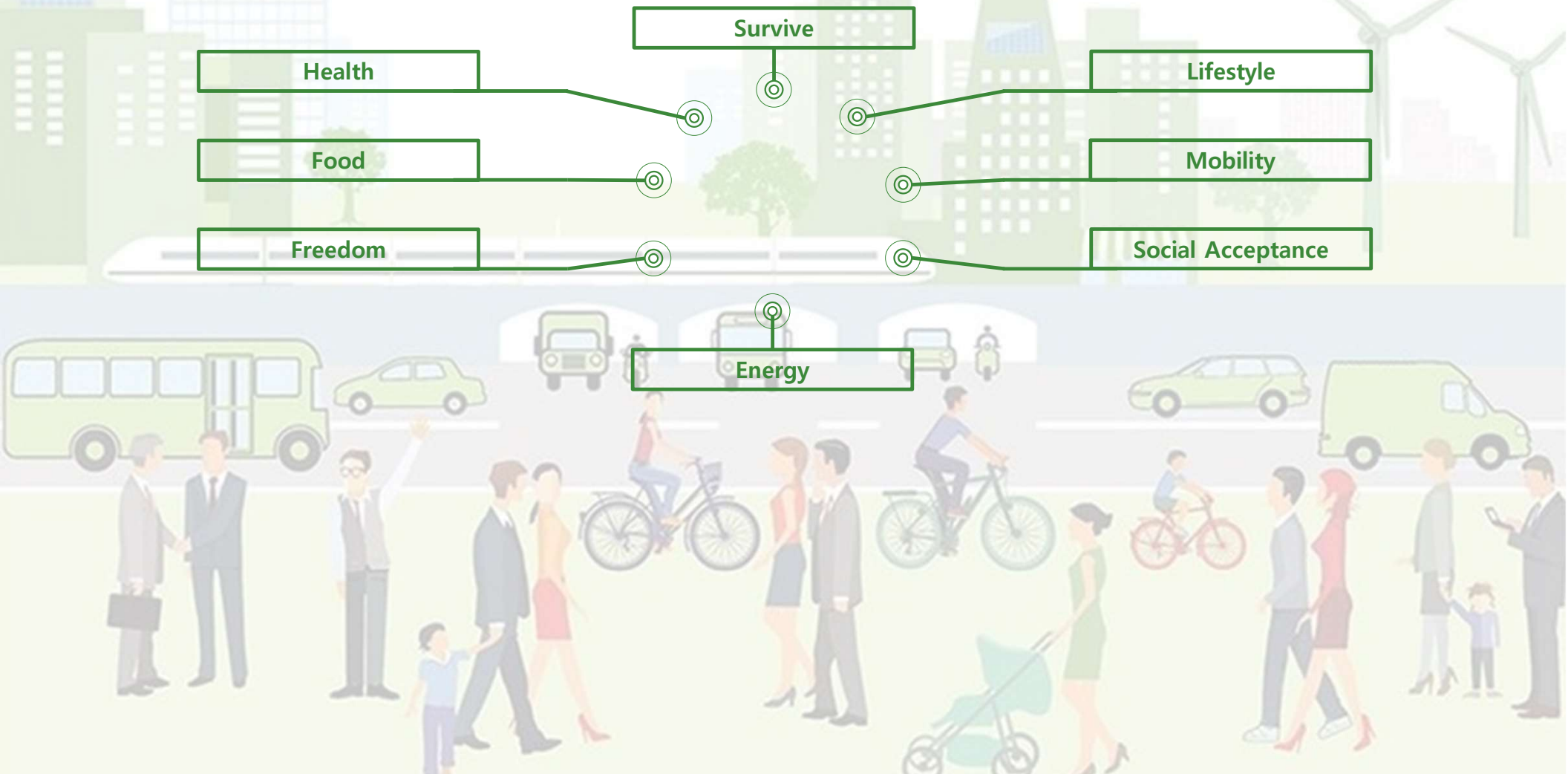
What do we do?

AgXeed provides the all-in
autonomy solution. A smart and
ready to use autonomy system
with scalable and customizable
hardware, virtual planning tools
and valuable data models.

TODAY'S CHALLENGES for our society...our real customers



CONFIDENTIAL



Top 25 and their origin

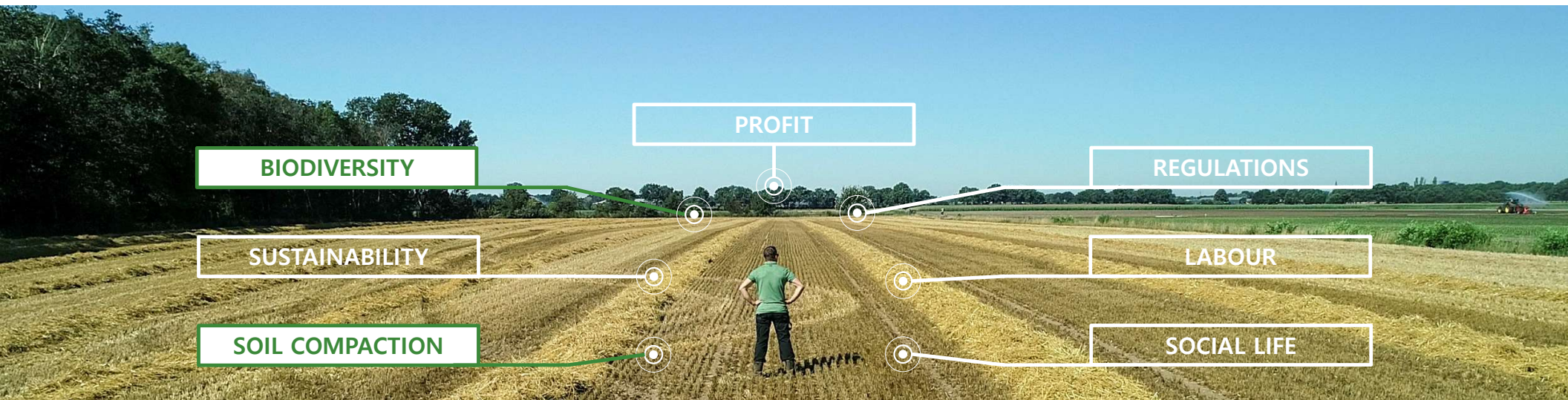


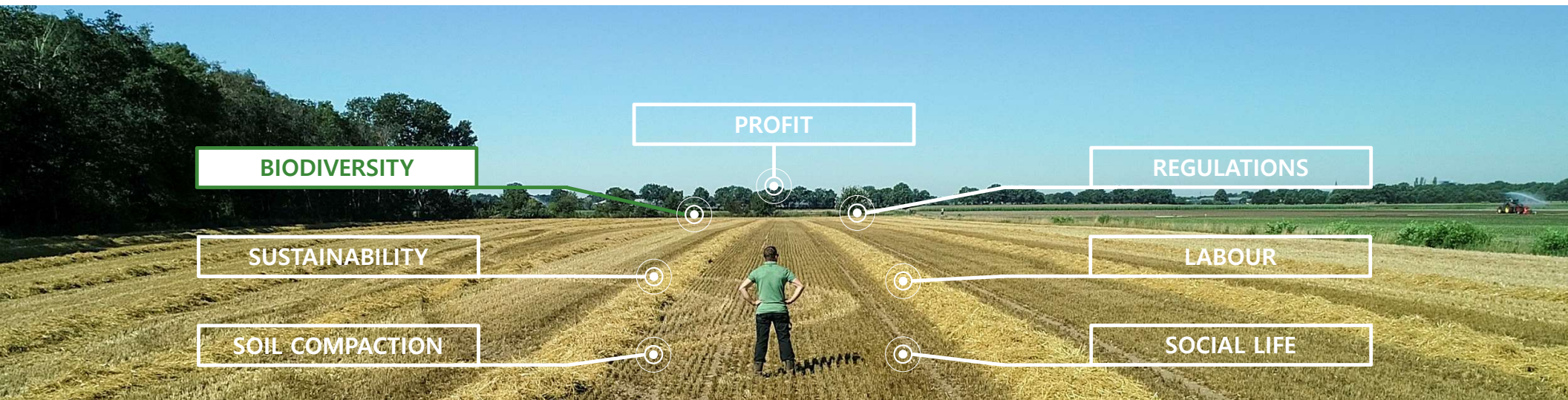
Round about 400 bil \$ Profit

Vs.

100-120 bil \$ Turnover

1	Apple	Electronics, telecommunications equipment	274.515	United States
2	Toyota Group	Engineering, various	256.721	Japan
3	Volkswagen Group	Automotive	253.965	Germany
4	Samsung Electronics	Electronics, various	200.734	South Korea
5	Foxconn	Electronics	181.945	Taiwan
6	Daimler	Automotive	175.827	Germany
7	Cardinal Health	Pharmaceuticals	152.922	United States
8	China Railway and Engineering Group	Engineering	141.383	China
9	Huawei	Telecommunications equipment, Electronics	129.183	China
10	Ford	Automotive	127.144	United States
11	Honda	Automotive	124.240	Japan
12	General Motors	Automotive	122.485	United States
13	Mitsubishi	Engineering, various	121.542	Japan
14	BMW	Automotive	112.794	Germany
15	SAIC Motor	Automotive	107.555	China
16	China Minmetals	Metals	102.014	China
17	FAW Group	Automotive	101.075	China
18	Hengli Group	Textiles	100.773	China
19	China Baowu Steel Group	Steel	97.643	China
20	Dell	Electronics	94.224	United States
21	Nestle	Food & Beverages	89.852	Switzerland
22	Hyundai Motor Company	Automotive	88.155	South Korea
23	Dongfeng Motor Group	Automotive	86.85	China
24	Sony	Electronics	84.893	Japan
25	Johnson & Johnson	Personal care products	82.344	United States





What does it mean?

CONFIDENTIAL

Biological Diversity

It refers to all the variety of life that can be found on Earth (plants, animals, fungi and micro-organisms) as well as to the communities that they form and the habitats in which they live.

“So everything above and IN the soil”

...how do we position ourselves towards our society



- This is not about biodiversity
- This is not about life above the soil
- ...and in the soil



...how our society starts to react

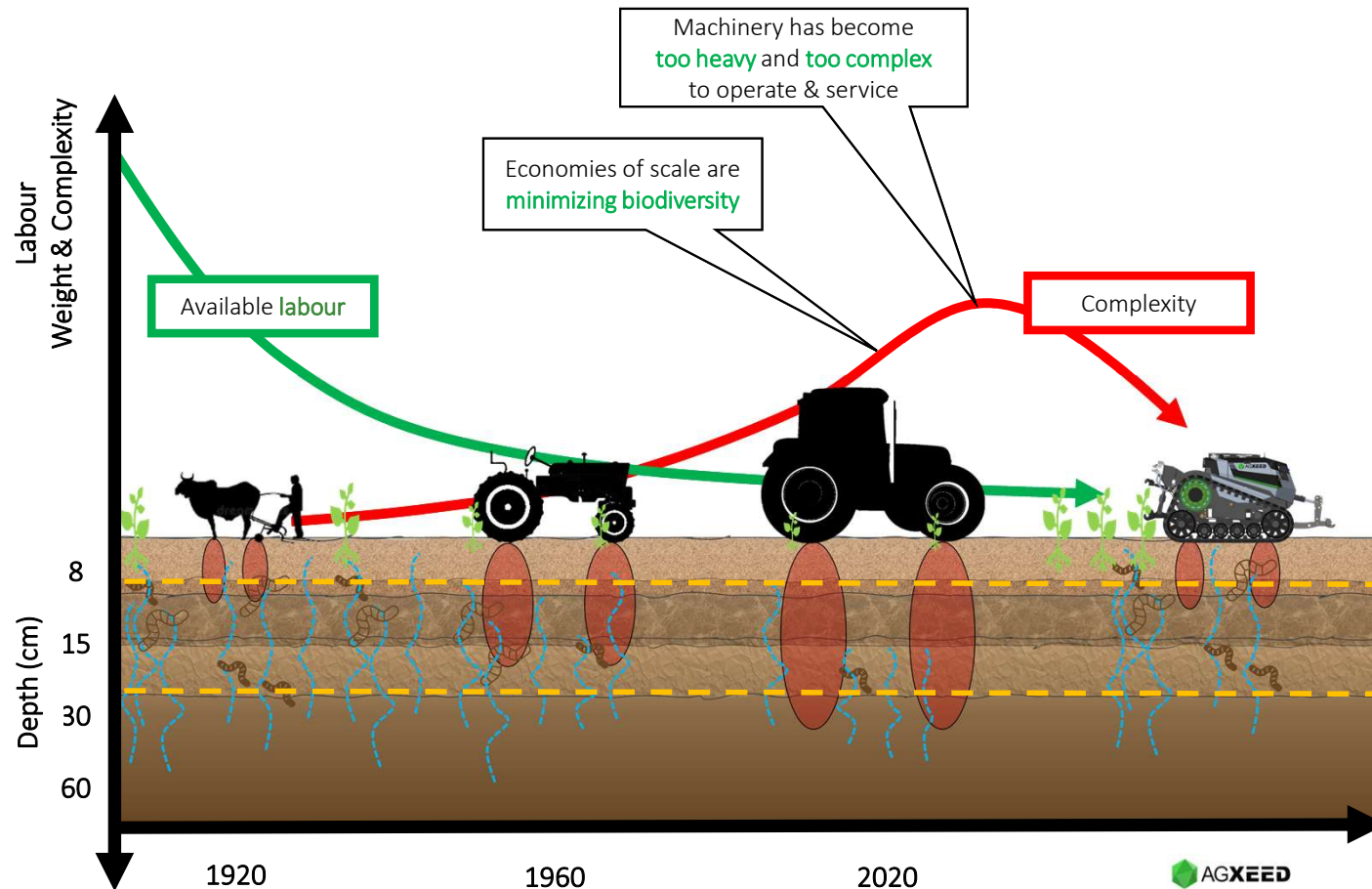


The message could be correct.

The action taken, an unacceptable
and and disrespectful act of violence!



Preserve our precious soils



Soil compaction, Sustainability, Biodiversity & Profit; A circle of dependencies

Indirect influence of soil compaction:



- reduces soil activity
- increases soil erosion
- increases the danger of floods
- increases evaporation of surface water

Direct influence of soil compaction:



- decreases water renewal
- decreases soil-water content
- impairs root space
- less bounded nutrients
- less breakdown of pesticides

CONFIDENTIAL

Break the trend towards “bigger is better”



CONFIDENTIAL

Direct influence of too complex:



- increases the dependency of skilled labour
- capital intensive
- increases downtime

Direct influence of too big:



- requires special road permissions
- increases fuel consumption

“Smarter is better”

	MF87		Factor
Capacity			3
Weight (kg)	3,400	26,500	7,8
Machine width (m)	3,00	3,30	1,1
Header width (m)	2,95	12,20	4,1
Displacement (cm3)	3,860	15,200	3,9
Power (hp)	65	790	12,2
Grain tank (l)	1,700	17,100	10,1
Price ~2020 (EUR)	75.000	550.000	7,3



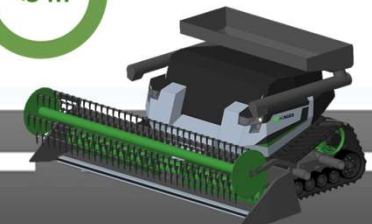
1960



2020

<10 t

<3 m



AGXFEED

Offer a sustainable alternative



Environmental Enhanced Concept:



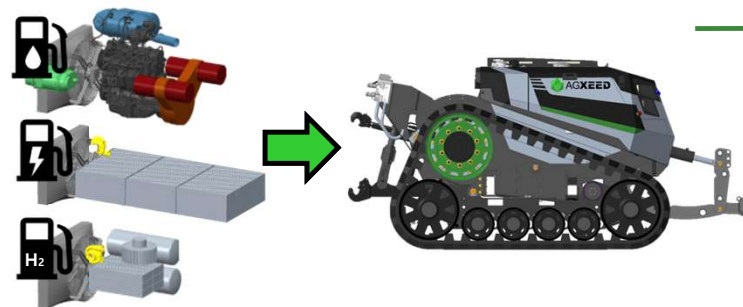
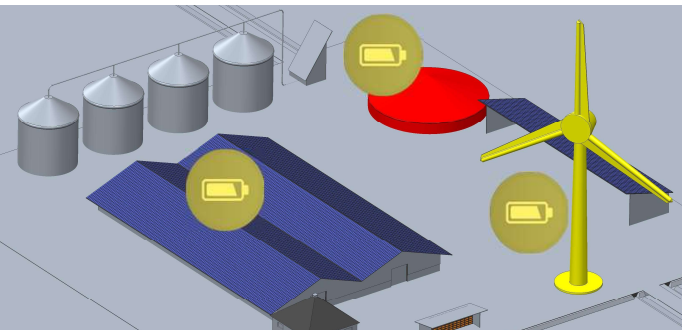
- Autonomy as a booster for mechanical weed treatment → **less use of chemicals**
- **Minimizing CO2 emissions** due to running in optimized performance range and efficient routing by implementation of AgXeed's Path Planning tool on the Portal
- **Less greenhouse gas emissions** [CH4 + N2O] due to fertile and healthy soils - captured by the increase of biomass



Prepared for renewable energy usage:



- **Efficient circular farming:**
crops → nutrients → electrical power → crops →
- **Hybrid & Full-Electric drivelines**



CONFIDENTIAL

From FARM to FORK



DATA HARVESTER



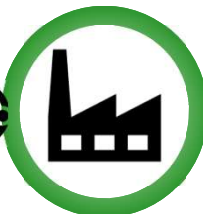
- Environmental health
- Economic vitality
- Human health & social equity
- Optimize supply and demand



Advisors



Farmer



Processor



Distributor



Retailer



Consumer

TRANSPARENCY THROUGHOUT



THE FOOD SUPPLY CHAIN

DATA DRIVEN
APPS &
ANALYTICS





CREATE NEW TASK

Name	Spading August 2020
Description	Maasriver
Field	Maasriver Field
Configuration	Front weight + Spader
Routing Mode	Optimal
Boundary Offset	< 3 meter >
Path Width	< 3 meter >
Headland Passes	< 4 >
Main Route Only	<input type="checkbox"/>
Task related settings	Change settings
	Save Route



OPTIMAL ROUTING (TIME / FUEL)

PATH TO PATH ROUTING



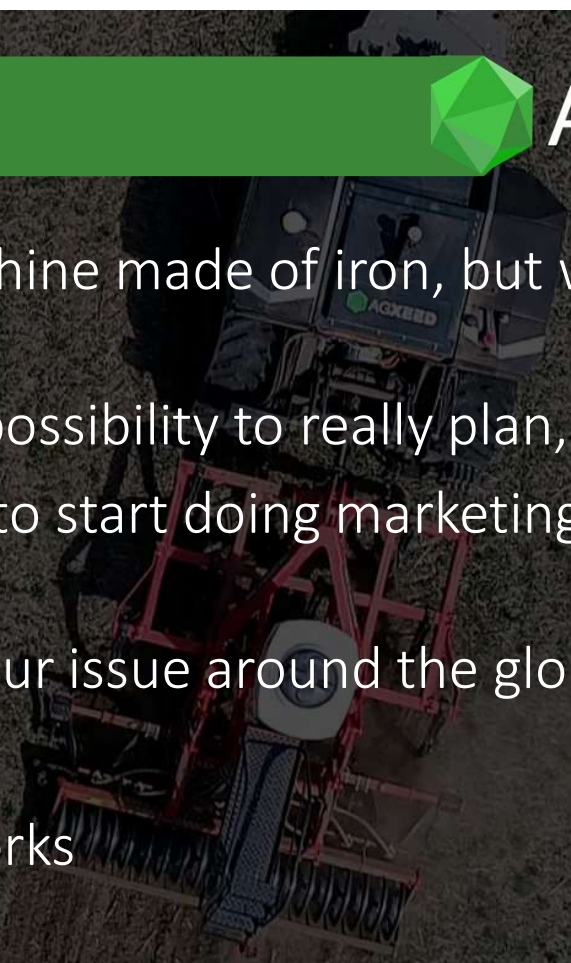
SERVICE &
DIAGNOSTICS

MISSION
PLANNING &
CONTROL

Puzzle piece



- Autonomy should not stop with a machine made of iron, but what is made of it can be lighter
- Autonomy as an ecosystem gives the possibility to really plan, act and analyse
- Autonomy gives farmers the freedom to start doing marketing to link them back to their real customers
- Autonomy is an answer to the big labour issue around the globe
- ...and now we have to prove, that it works



**THANK YOU FOR
YOUR ATTENTION!**



AGXeed

www.agxeed.com / info@agxeed.com

CONFIDENTIAL